

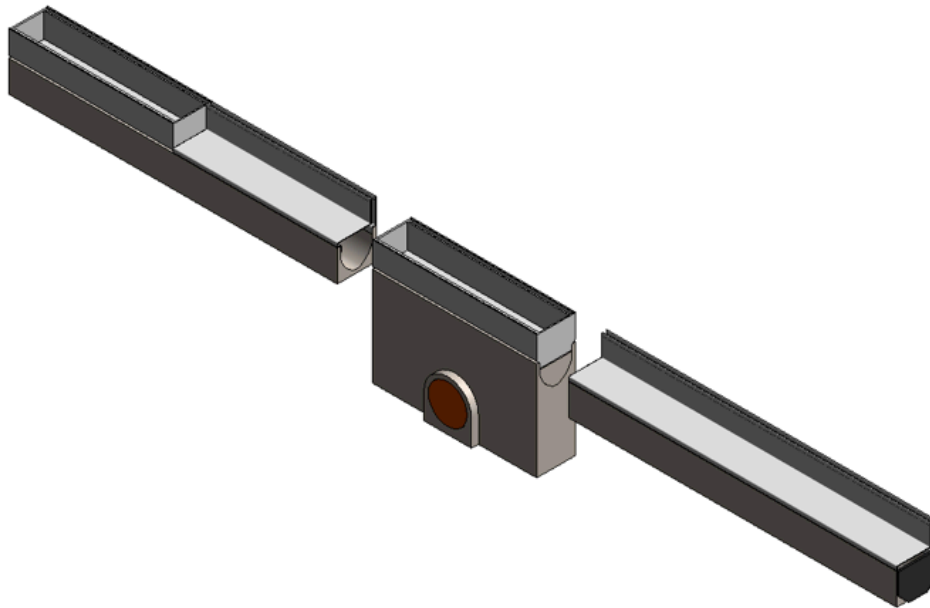
ACO RainDrain Brickslot B 125

Channel drainage system

User Guide for Autodesk Revit files

The ACO RainDrain Brickslot B 125

ACO RainDrain Brickslot B 125 is contained within 1 family

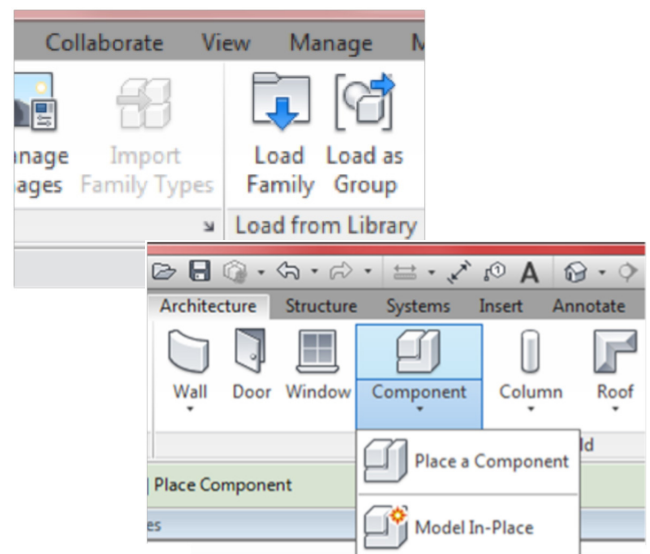


Loading ACO RainDrain Brickslot B 125 into your project

Each system is modelled as a generic family that can simply be loaded into your project.

1. Download the relevant ACO RainDrain Brickslot B 125 file and save it to a suitable location
2. Open your project and navigate to an appropriate view
3. Navigate to the "Insert" icon on the Revit ribbon and click "Load Family"
4. Select the ACO RainDrain Brickslot B 125 Revit file you saved earlier
5. The file can now be placed into your project. Navigate to the "Architecture/Component" icons on the Revit ribbon and click "Place a Component"

Note that all of the ACO RainDrain Brickslot B 125 files are "floor" based items.



ACO Building Drainage

A division of ACO Technologies plc
ACO Building Drainage, ACO Business Centre,
Caxton Road, Bedford, MK41 0LF

Tel: 01462 816666
Fax: 01462 851490

e-mail: abdtechnical@aco.co.uk
website: www.acobd.co.uk

▶ Using the channel system and components file

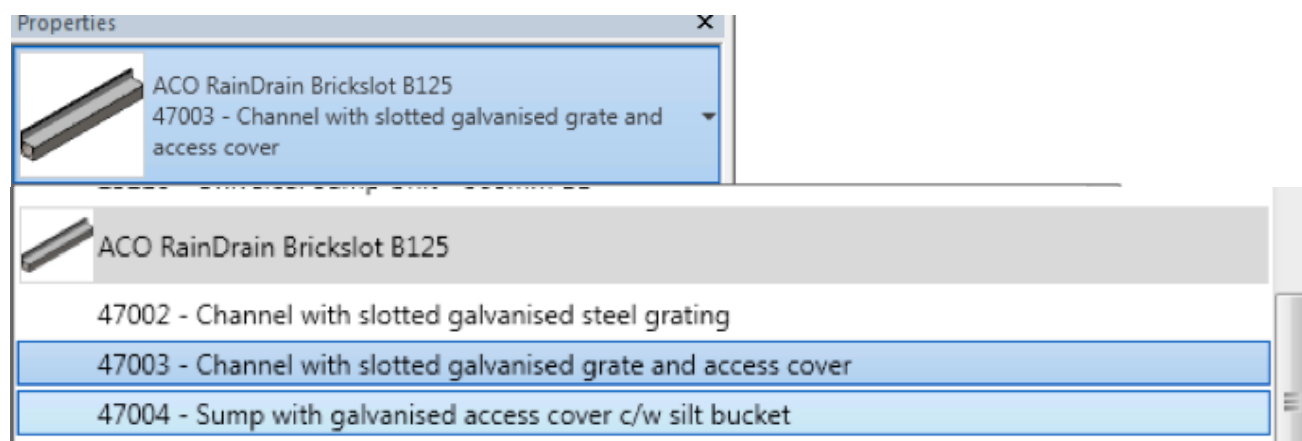
ACO RainDrain Brickslot B125

Step 1: Select the ACO RainDrain Brickslot B 125 channel component

All of the different channels of the RainDrain channel system are available within the Revit family.

Examples of the variants included:

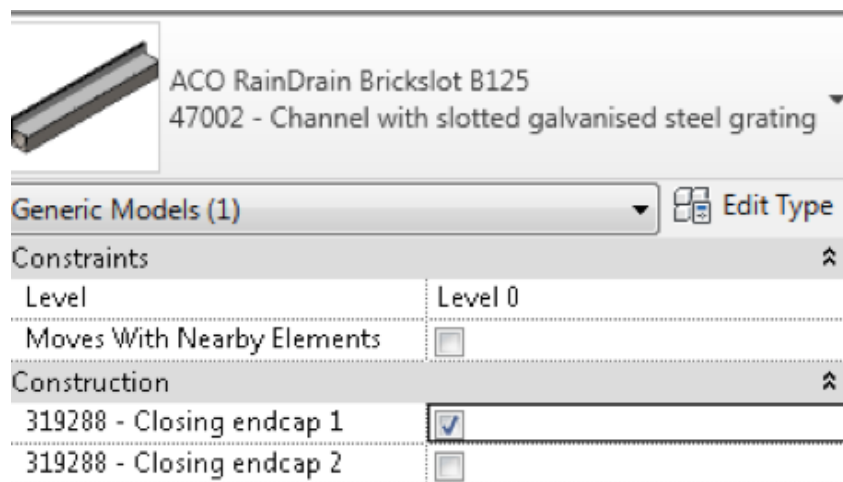
- 1m Constant depth with brickslot top
- 0.5m Sump with access cover
- 1m Constant depth with 0.5m top and access cover



Select your option from the “Properties” drop down menu

▶ Select the end cap

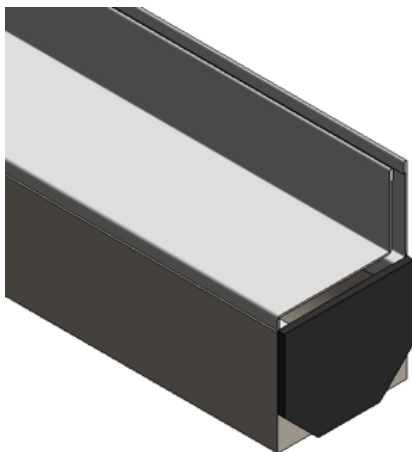
Additional features have been built into the ACO RainDrain Brickslot B 125 file that allows simple on/off selection of the end cap.



By default the end cap is turned off and will not be included in the project. Turn on to be included in the project.

To choose the end cap, position the channel within the project and then select it. Once selected, the “Properties” box will appear on the left hand side of the screen for the component.

Options can be made from here.



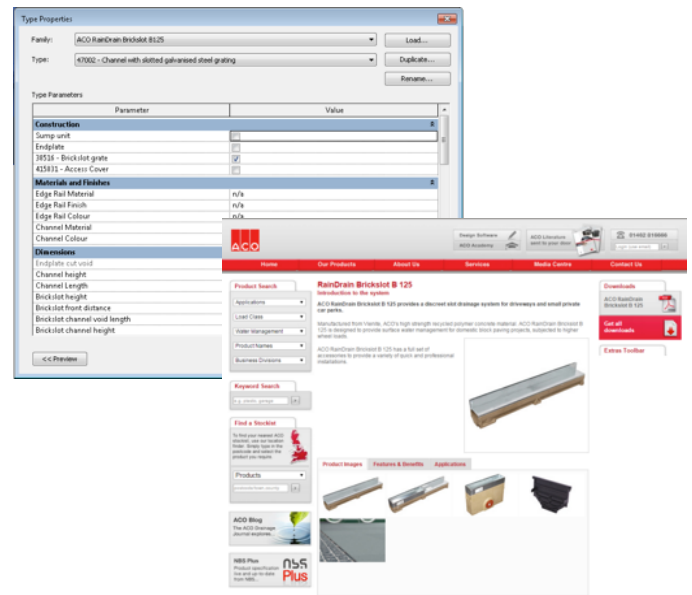
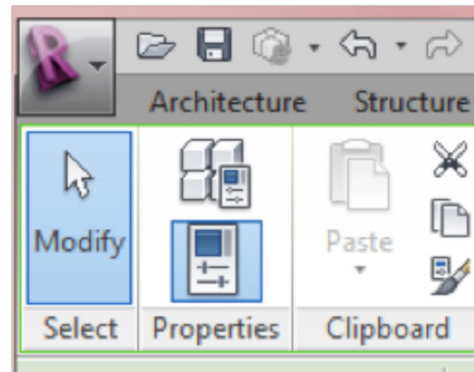
Channel with an end cap selected

► Type properties

The ACO RainDrain Brickslot B 125 file has a wealth of useful information embedded within it, including installation and maintenance details.

This information, along with much more is either stored within the files or available through hyperlinks within the components type properties.

1. To access the information within the component, simply select the component and then click the “Type Properties” icon on the Revit ribbon at the top of the screen
2. The “Type Properties” information sheet will now be displayed on the screen. Simply scroll up and down the sheet to find the information you require.
3. The information within the “Type Properties” is stored as “Shared Parameters” so can easily be used when creating a schedule for example.



► Material library

The ACO RainDrain Brickslot B 125 file contains materials that are already pre-loaded into the components. When loading the ACO RainDrain Brickslot B 125 file into your project the pre-loaded materials will automatically transfer through.

► Other notes

You can add the ACO RainDrain Brickslot B 125 systems to your company template file. They will then be available without the need to load them when starting a new project. The ACO RainDrain Brickslot B125 systems have been created in Revit 2013.