

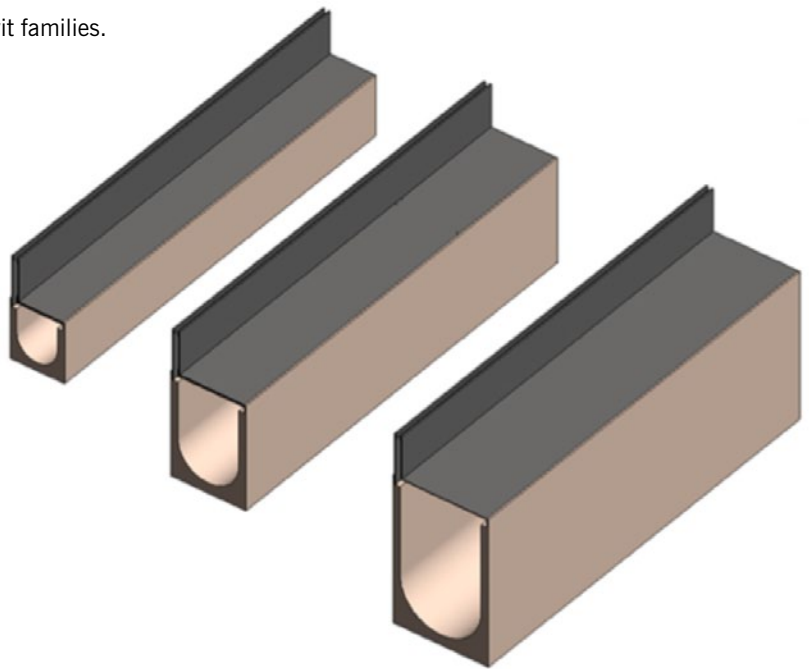
ACO MultiDrain Brickslot Channel drainage system

User Guide for Autodesk Revit files

▶ The ACO MultiDrain Brickslot Range

ACO MultiDrain Brickslot is divided into 6 individual Revit families.

- M100D Brickslot
- M100DS Brickslot
- M150D Brickslot
- M150DS Brickslot
- M200D Brickslot
- M200DS Brickslot

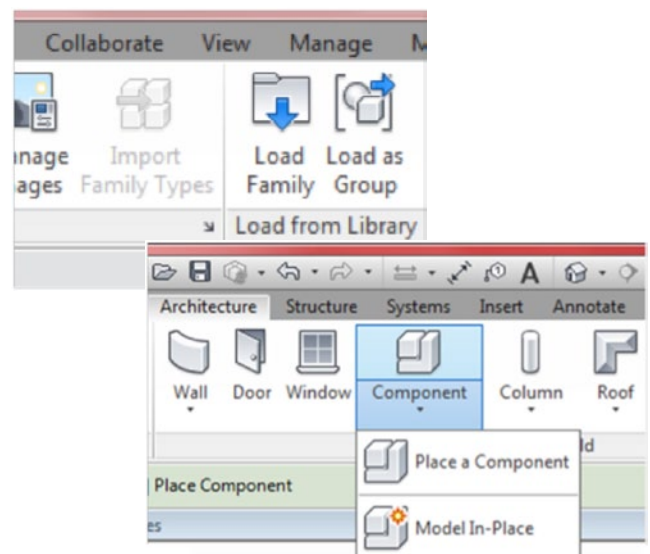


▶ Loading ACO MultiDrain Brickslot into your project

Each system is modelled as a generic family that can simply be loaded into your project.

1. Download the relevant ACO MultiDrain Brickslot file and save it to a suitable location
2. Open your project and navigate to an appropriate view
3. Navigate to the "Insert" icon on the Revit ribbon and click "Load Family"
4. Select the MultiDrain Brickslot Revit file you saved earlier
5. The file can now be placed into your project. Navigate to the "Architecture/Component" icons on the Revit ribbon and click "Place a Component"

Note that all of the MultiDrain Brickslot files are "floor" based items.



ACO Water Management: Civils + Infrastructure

A division of ACO Technologies plc
ACO Business Park, Hitchin Road, Shefford,
Bedfordshire, SG17 5TE

Tel: 01462 816666
Fax: 01462 815895

e-mail: technical@aco.co.uk
website: www.aco.co.uk

Using the channel system and options

ACO MultiDrain Brickslot channel system and options

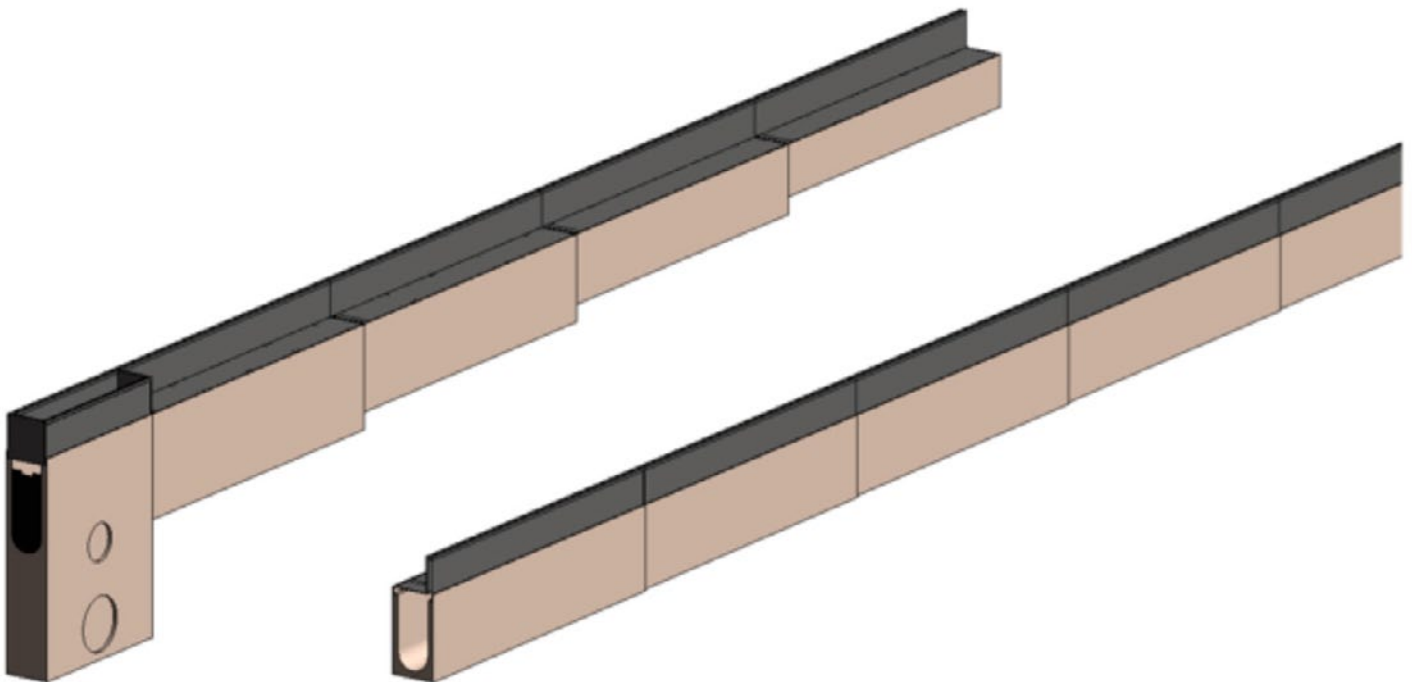
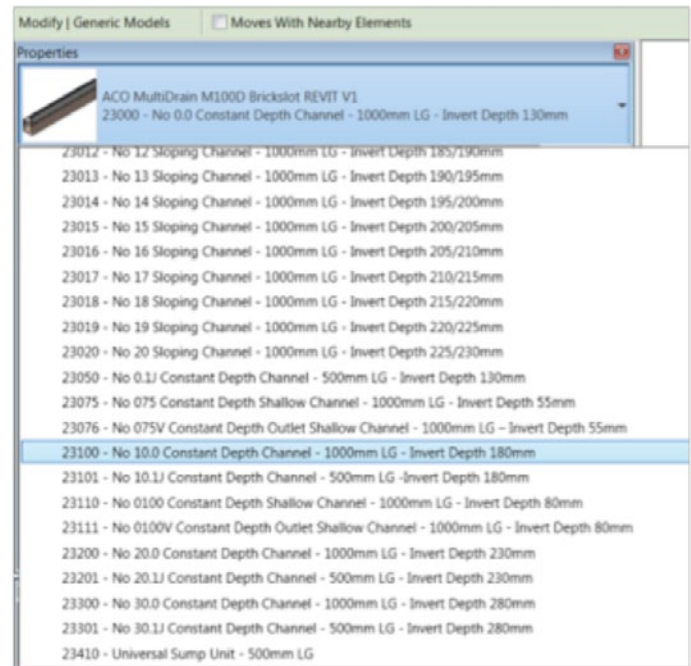
Step 1: Select the channel

All of the different options of the MultiDrain Brickslot channel systems are available within the Revit family.

Examples of the options included:

- 1m Constant depth channel
- 0.5m Constant depth channel
- 1m Shallow depth channel
- 1m Sloping channel
- 0.5m Sump units

Select your option from the “Properties” drop down menu.



Step 2: Select the grating

Additional features have been built into the MultiDrain Brickslot files that allow simple selection of the range of gratings. Grating types include:

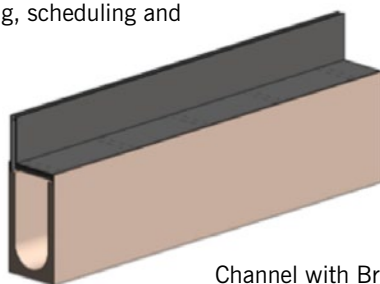
- 1m Brickslot grating
- 0.5m Brickslot grating
- 0.5m Access Unit
- Class C 250 and D 400

To choose the actual grating type required, position the channel within the project and then select it. Once selected, the “Properties” box will appear on the left hand side of the screen for the channel.

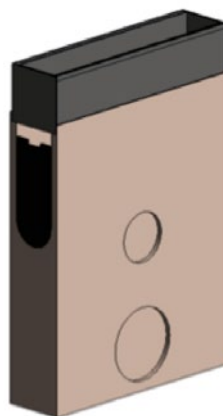
Options can be made from here by using the tick box feature.

All channels will automatically display a Brickslot Grating, the same length as the channel itself. All sump units will automatically display a Brickslot Access unit.

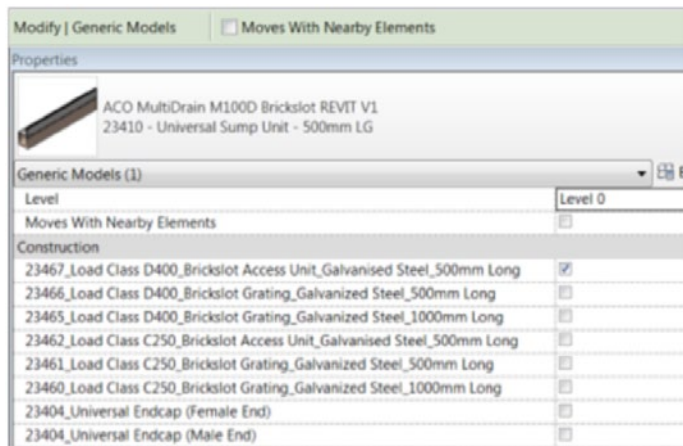
Once the grating type selection has been made in the “Properties” box it can, for example, be referenced for costing, scheduling and maintenance purposes.



Channel with Brickslot Grating.



Sump unit with Brickslot Access Unit.



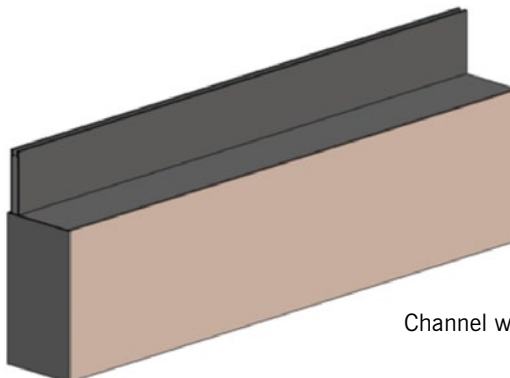
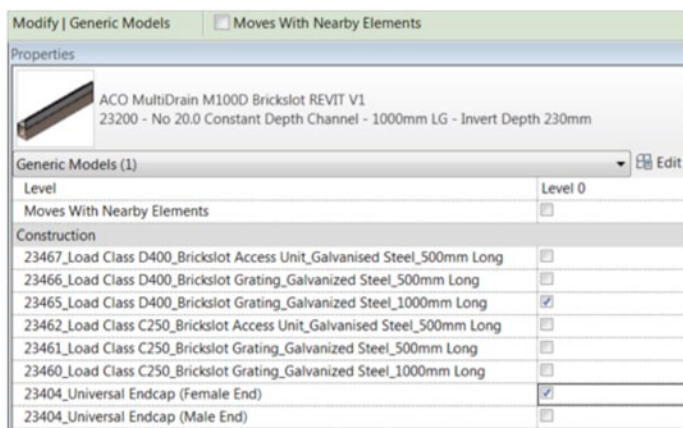
Step 3: Select the end cap

Additional features have been built into the MultiDrain Brickslot files that allow simple on/off selection of the end cap.

By default the end cap is turned off and will not be included in the project. Turn on to be included in the project.

To choose the end cap, position the channel within the project and then select it. Once selected, the “Properties” box will appear on the left hand side of the screen for the component.

Options can be made from here.



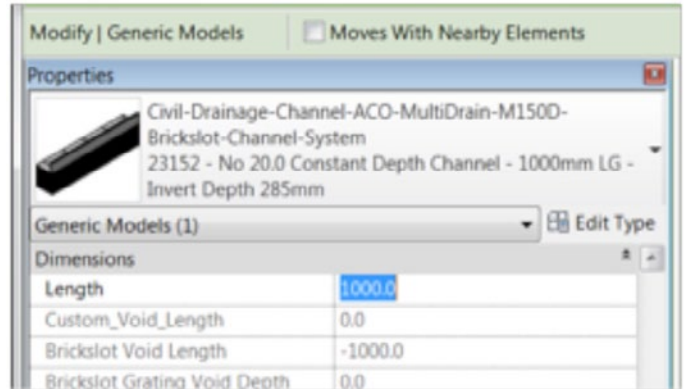
Channel with an end cap selected.

Step 4: Non-standard channel lengths

Additional features have been built into the MultiDrain Brickslot files that allow non-standard channel lengths to be incorporated in the project.

To choose a non-standard channel length, position the channel within the project and select it, the “Properties” box will appear on the left hand side of the screen for the component.

Options for shorter, non-standard channel lengths can be made here.

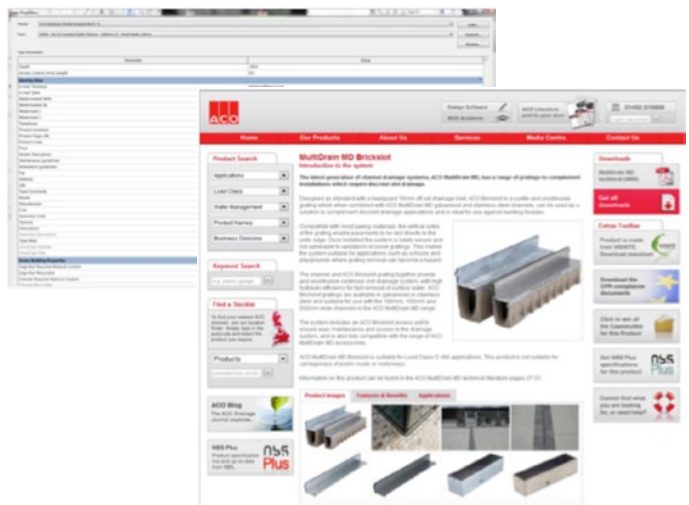
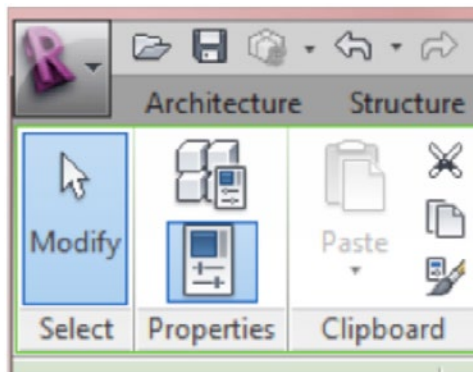


Type properties

The ACO MultiDrain Brickslot file has a wealth of useful information embedded within it, including installation and maintenance details.

This information, along with much more is either stored within the files or available through hyperlinks within the components type properties.

1. To access the information within the component, simply select the component and then click the “Type Properties” icon on the Revit ribbon at the top of the screen
2. The “Type Properties” information sheet will now be displayed on the screen. Simply scroll up and down the sheet to find the information you require.
3. The information within the “Type Properties” is stored as “Shared Parameters” so can easily be used when creating a schedule for example.



Material library

The ACO MultiDrain Brickslot files contain materials that are already pre-loaded into the components. When loading the ACO MultiDrain Brickslot files into your project the pre-loaded materials will automatically transfer through.

Other notes

You can add the ACO MultiDrain Brickslot systems to your company template file. They will then be available without the need to load them when starting a new project. The ACO MultiDrain Brickslot systems have been created in Revit 2013.